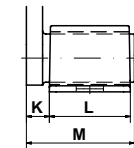
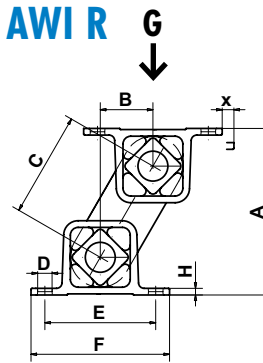


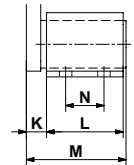
# Anti-vibration Mounts Type AWI



Type AWI R

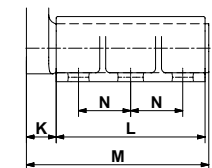
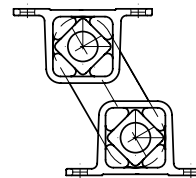


size 15 to 27



size 38 to 50

Type AWI L



size 50-2

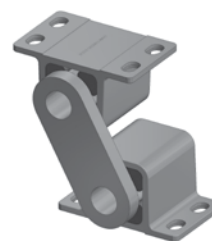
Art. No.	Type	Load capacity Gmin. – Gmax. [N]	A un- loaded	A* max. load	B	C	D	E	F	H	K	L	M	N	Weight [kg]
05 111 101	AWI 15R	180 – 400	68	55	22.5	45	7x10	50	65	3	10	40	52	–	0.2
05 121 101	AWI 15L														
05 111 102	AWI 18R	350 – 850	88	70	30	60	9x15	60	80	3.5	14	50	67	–	0.9
05 121 102	AWI 18L														
05 111 103	AWI 27R	650 – 1'500	111	91	35	70	11x20	80	105	4.5	17	60	80	–	1.9
05 121 103	AWI 27L														
05 111 104	AWI 38R	1'200 – 3'000	150	122	47.5	95	13x20	100	125	6	21	80	104	40	4.5
05 121 104	AWI 38L														
05 111 105	AWI 45R	2'000 – 4'800	177	145	55	110	13x26	115	145	8	28	100	132	58	7.8
05 121 105	AWI 45L														
05 111 106	AWI 50R	4'000 – 9'600	194	159	60	120	17x27	130	170	12	40	120	165	60	12.8
05 121 106	AWI 50L														
05 111 108	AWI 50-2R	6'600 – 16'000	194	159	60	120	17x27	130	170	12	45	200	250	70	20.3
05 121 108	AWI 50-2L														

Art. No.	Type	Natural frequency Gmin. – Gmax. [Hz]	x max.	Material structure
05 111 101	AWI 15R	7.2 – 4.5	14	Stainless steel casting GX5CrNi19-10 (1.4308)
05 121 101	AWI 15L			
05 111 102	AWI 18R	6.5 – 3.7	19	
05 121 102	AWI 18L			
05 111 103	AWI 27R	6.0 – 3.7	22	
05 121 103	AWI 27L			
05 111 104	AWI 38R	5.2 – 3.2	31	
05 121 104	AWI 38L			
05 111 105	AWI 45R	5.0 – 2.8	35	
05 121 105	AWI 45L			
05 111 106	AWI 50R	4.8 – 2.8	38	
05 121 106	AWI 50L			
05 111 108	AWI 50-2R	4.8 – 2.8	38	
05 121 108	AWI 50-2L			

The elements can be combined with one another (identical heights and operation behaviour)

\* compression load Gmax. and final cold flow compensation (after approx. 1 year).

Type AWI R



Type AWI L

