

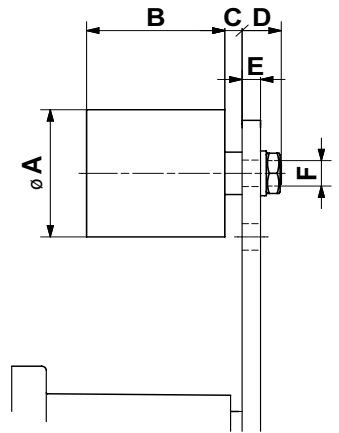
New Generation of Roller Light Type RL



- Designed for light-duty drives
- Precise dimensional tolerance for smooth operation
- Maintenance-free sealed ball bearings
- For cost-sensitive applications
- Molded-in ball bearing
- Plastic material polyamide



Tensioning Rollers Type RL and R



Tensioning Roller Light Type RL (black). Designed for light-duty drives.

Type	Art. No.	Max. speed [rpm]	Max. belt width	A	B	C	D	E max.	F	Torque hex nut [Nm]	Size SE	Weight [kg]
RL 11	06 580 901	6000	30	30	35	3	19	10	M8	25	11	0.08
RL 15/18	06 580 902	6000	40	40	45	6	21	9	M10	49	15/18	0.17
RL 27	06 580 903	4500	55	60	60	8	22	8	M12	86	27	0.50

Plastic material: PA6

Working temperature: -35° to +80°C



Tensioning Roller Standard Type R (blue). Designed for all applications.

Type	Art. No.	Max. speed [rpm]	Max. belt width	A	B	C	D	E max.	F	Torque hex nut [Nm]	Size SE	Weight [kg]
R 11	06 580 001	8000	30	30	35	2	14	5	M8	25	11	0.08
R 15/18	06 580 002	8000	40	40	45	6	16	7	M10	20	15/18	0.17
R 27	06 580 003	6000	55	60	60	8	17	8	M12	35	27	0.40
R 38	06 580 004	5000	85	80	90	8	25	10	M20	165	38	1.15
R 45	06 580 005	4500	130	90	135	10	27	12	M20	165	45	1.75

Plastic material: PA6

Working temperature: -35° to +100°C



ROSTA AG

Hauptstrasse 58

CH-5502 Hunzenschwil

Phone +41 62 889 04 00

Fax +41 62 889 04 99

E-Mail info@rosta.ch

Internet www.rosta.com